

OPTRON PRO: Quick Setup Guide

Contents:



Step 1: Attach the clamp



Step 2: Insert the System Extension (optional)



Step 3: Carefully slide the swivel arm into the notch



Step 4: Connect the A/C cable to the power supply



Step 5: Connect the power supply cable to the OPTRON



Step 6: Setup the monitor (power cable, VGA cable)



Step 7: Connect the monitor cable to the monitor port on the OPTRON



Step 8: Make sure that the PC/ OPTRON Toggle is pushed in



OPTRON ASSISTIVE TECHNOLOGIES

Andreas Heim
P.O. Box 5454
Morton, IL 61550, USA

Phone & Fax: 1-309-694 2077
Toll Free: 1-888-5 OPTRON
(1-888-567 8766)

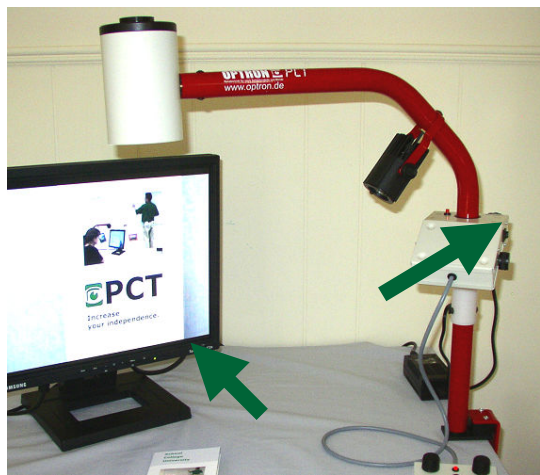
E-mail: info@optronusa.com
Web: www.optronusa.com

OPTRON 
Look at it.

Step 9: Plug power supply and monitor cable into a wall socket.



Step 10: Turn on the OPTRON and the monitor.



Camera Positioning:



Turn the black camera ring on the white base for an upright and leveled picture.



Turn the camera base to magnify at the desk (close up lens required) or to see the surroundings.



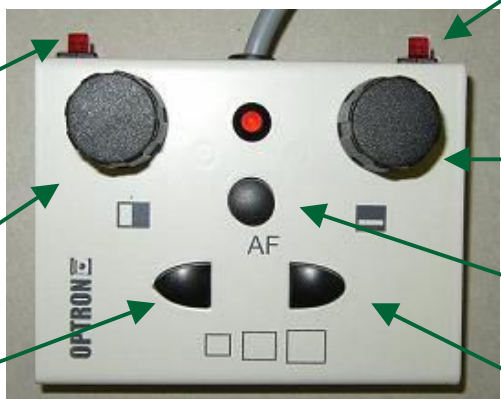
Turn the swivel arm to position the camera at the ideal viewing angle.

Functions:

PC/
OPTRON
Toggle

Brightness

Zoom out



Reverse
Polarity
Toggle

Reading
Line

Auto Focus
on/off

Zoom in

Monochrome/
Color
Selection
Knob



Power
Switch

Spotlight on/off



OPTRON ASSISTIVE TECHNOLOGIES

Andreas Heim
P.O. Box 5454
Morton, IL 61550, USA

Phone & Fax: 1-309-694 2077
Toll Free: 1-888-5 OPTRON
(1-888-567 8766)

E-mail: info@optronusa.com
Web: www.optronusa.com

OPTRON 
Look at it.